

DMR

Tetra

P25



NFC



GPS



Bluetooth



Wi-Fi



2W Loudspeaker



IP67

IRC100

HYBRID RUGGED RADIO

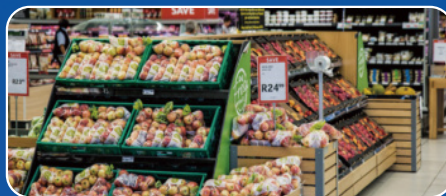
Efficient Dual Standby Solution

- PTToC Device:**
Support voice, data, and video, as a PoC radio
- Palm Microphone for Narrowband Handheld:**
Easy to use as a peripheral for narrowband radios, investment protection
*Support DMR/TETRA/P25
- Gateway Mode:**
Plug-n-play gateway, communicate between the private and public network
*Support DMR/TETRA, P25 In Development

SCENARIOS



Public Safety



Supermarket



Emergency Response



Transportation



Energy



Rail

PRODUCT PARAMETERS

HARDWARE

| | |
|--------------|---|
| CPU | MTK6739WA, 1.5GHz |
| RAM+ROM | 1GB+8GB |
| SIM Card | Nano SIM Card |
| USB | Type-C |
| Screen Size | 1.08" TFT, 128*220 |
| Speaker | 8Ω, Max 2W, Ø36mm |
| Microphone | Dual microphone, Support noise cancellation |
| Battery | 3,500mAh |
| Output | 5V 2A |
| Sensor | Silent SOS, Man-Down |
| Working Time | 8h |
| Standby Time | 23h |
| Dimension | 90.9*63*30.5mm (without Belt Clip) |
| Weight | ≈192g |

CERTIFICATION

| | |
|--------------------|--------|
| Drop | 1.2m |
| Ingress Protection | IP67 |
| Certification | CE/FCC |

CONNECTION

| | |
|------------|---------------------------------------|
| EU Version | GSM: B2/B3/B5/B8 |
| | WCDMA: B1/B2/B5/B8 |
| | TDS: B34/B39 |
| | FDD-LTE: B1/B3/B5/B7/B8/B20/B28A/B28B |
| | TDD-LTE: B38/B39/B40/B41 |
| US Version | CDMA/EVDO: CDMA2000 1X/EVDO BCO |
| | GSM: B2/B3/B5/B8 |
| | WCDMA: B1/B2/B4/B5/B8 |
| | TDD: B38/B40 |
| Wi-Fi | FDD: B2/B4/B5/B7/B8/B12/B17/B66 |
| | IEEE 802.11 a/b/g/n, 2.4G & 5G |
| | Bluetooth |
| Bluetooth | BT4.0 |
| Navigation | AGPS/GPS/GLONASS |
| NFC | Support |

OS

| | |
|----|-------------|
| OS | Android 8.1 |
|----|-------------|

STANDARD ACCESSORIES



Charging Cable



Power Adaptor



Belt Clip



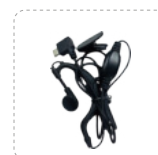
Battery



Strap



Connection Cable



Earphone



Desktop Charger

OPTIONAL ACCESSORIES



Inrico Technologies Co., Ltd.

Tel: +86 755 8327 3589 Email: sales@inricosolutions.com www.inricosolutions.com
A1703, Shenzhen National Engineering Laboratory Building, No.20 Gaoxin South 7th Road, High-tech Community, Yuehai Street, Nanshan District, Shenzhen, Guangdong.

Inrico is dedicated to providing professional communication solutions to global users with quality & efficiency and enrich global wireless communications ecosystem. For more information about our products and solutions, please contact us or visit www.inricosolutions.com.

Inrico and stylized Inrico logo are trademarks of Inrico Technologies Co., Ltd. All rights reserved

